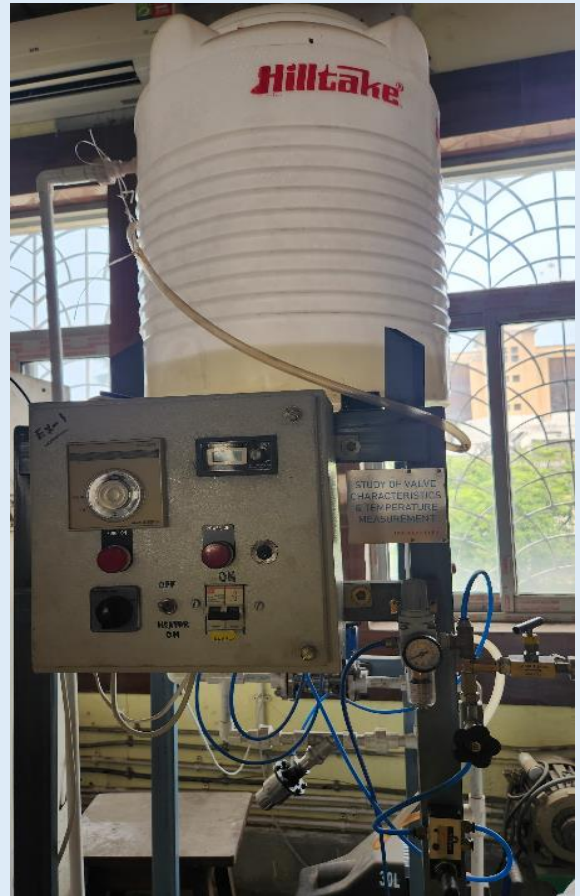


Linear valve, Quick opening valve, Equal percentage valve and the plot of characteristics of all valves

Control Valve: 3 nos.
Characteristics - Linear, Equal (%) & quick opening,
Type -pneumatic, size - 112,
Actuator - 15 Square inch
Stroke- 14mm,
Pressure input-3- 15 psi.
Water Tank: Material - Stainless Steel,
Capacity 25 Litres.
Water Circulation: FHP pimp champion
Overhead Tank: Material - Stainless Steel
Capacity: 10 litres.
Flow Measurement: Rotameter.
Pressure Head Measurement: By Single Column
Manometer.
Pressure Regulator: 0-2kg/cm².
Pressure Gauge: Bourdon Type, 0-2kg/cm².
Piping: Size 1/2"
The setup is well-designed and arranged on a rigid
structure painted with industrial Polyurethane
Coating



MICROLINE INDIA

Email: info@microlineindia.in

www.microlineindia.in